



— SENSEI —



Ruggedly built of foam cored fiberglass to the highest international standards, SENSEI was born again in 1996 when she went through a 13' (4 m) extension and interior transformation, designed by Glade Johnson Design, and achieved in the Pacific Northwest Yard of Admiral Marine, world famous for their skillful fiberglass composite work.

WELCOME ON BOARD...SENSEI

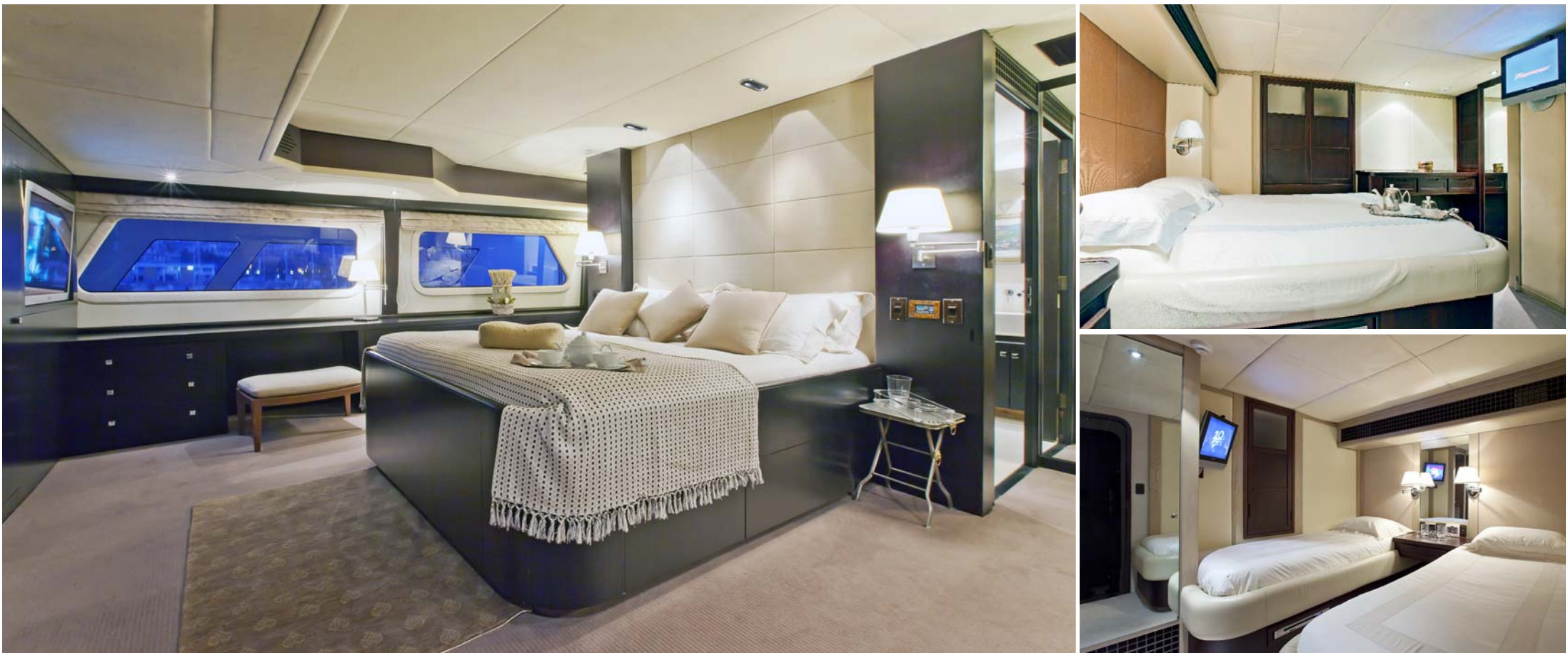


Ten years after (in 2006/2007) she went through another extensive refit (just completed in the famous Benetti Shipyard in Italy) which gave to SENSEI another life: you will fall instantly in love with the extraordinary environment created by famous interior designer OU BAHOLYODHIN, who left intact her light exotic touch ("SENSEI" means "Teacher" in Japanese).



A great layout, with a huge "terrace/flybridge", a cozy and warm sky lounge with both exterior and interior dining areas; four guest cabins and an on deck Master stateroom, are all made possible due to her larget 27' (8.2 m) beam.

UPPER AFT DECK & LOUNGE,  
MAIN AFT DECK, SALON & DINING ROOM,  
OWNER'S STATEROOM, EN SUITE



From her flybridge and mast, through her interior, and down to her added extension of decks and upper lounge, every detail was intimately scrutinized to maximize the relax and comfort of the guests. Even in her engine room, major systems were replaced or upgraded with more reliable and less noisy systems.

## SPECIFICATIONS & DECK PLANS



The powerful boat deck davit can lift tenders and toys off to either side of the yacht from the boat deck.

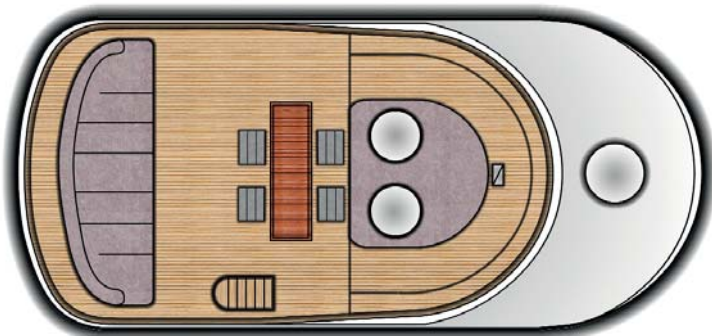
The huge transom platform offers a large shower for rinsing off prior to going on board, after enjoying the beach, swimming or enjoying the water toys.

Serious improvements with charter logistics in mind, were anticipated in the refit of Sensei, such as a large professional galley, and huge storage with abundant refrigeration and freezer space.

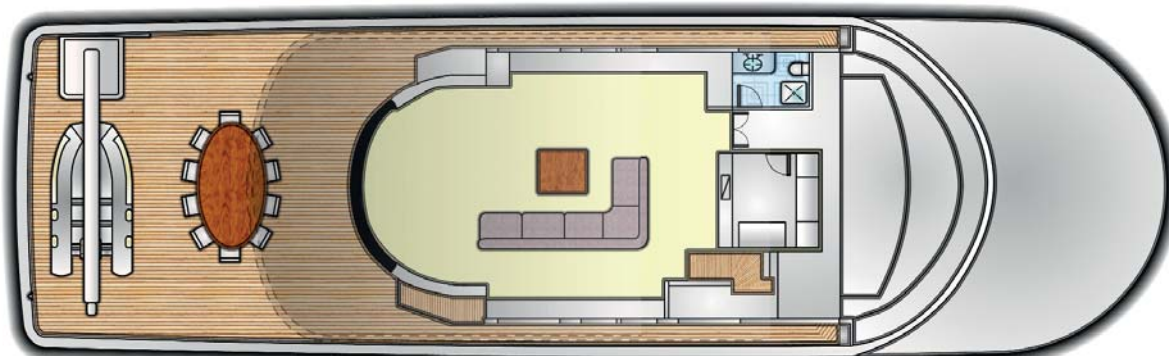
### SPECIFICATIONS

Year:	1991/2007
Builder:	Mitsubishi Admiral Marine 1991/1995
Total Refit:	Benetti Yachts-Italy 2006/2007
Naval Architecture:	Mitsubishi Heavy Industries
Stylist/Interior Design:	Glade Johnson
Construction:	Fiberglass, teak decks
L.O.A.:	131' (39.09 m)
Beam:	27' (8.1 m)
Draft:	7' (2.18 m)
Tankage:	Fuel - 7,700 gallons (29,148 l) Water - 2,000 gallons (7,571 l)
Watermakers:	(2) Sea Recovery, 1200 gallons per day (4,542 l) (rebuilt 2007)
Cruising Speed:	13 knots @ 1500 rpm
Max speed	15knots @ 1750 rpm
Range:	2800 miles @ 10 knots 2000 miles @ 12 knots
Engines:	Mitsubishi S1 2A2-MTK 1,000 hp each @ 1750 rpm; (totally rebuilt 2007)
Electrical:	12/24 volt DC - 110, 220, 380 volt, 3 phase 50/60 cycle AC system (rotary converter 2006).
Generators:	(2) 80 kw 1800 rpm Northern Lights (rebuilt 2007)
Stabilizers:	Naiad model 353 (rebuilt 2007)
Bow Thruster:	Westmar T50, 50 hp(rebuilt 2007)
Waste Treatment:	Hamann (2007)
Tenders:	18.6' (5.7 m) Nautica Deluxe with Merc 260 jet 12' (4.2 m) Nautica hp 40 Yamaha outboard.
Class. :	RINA - MCA

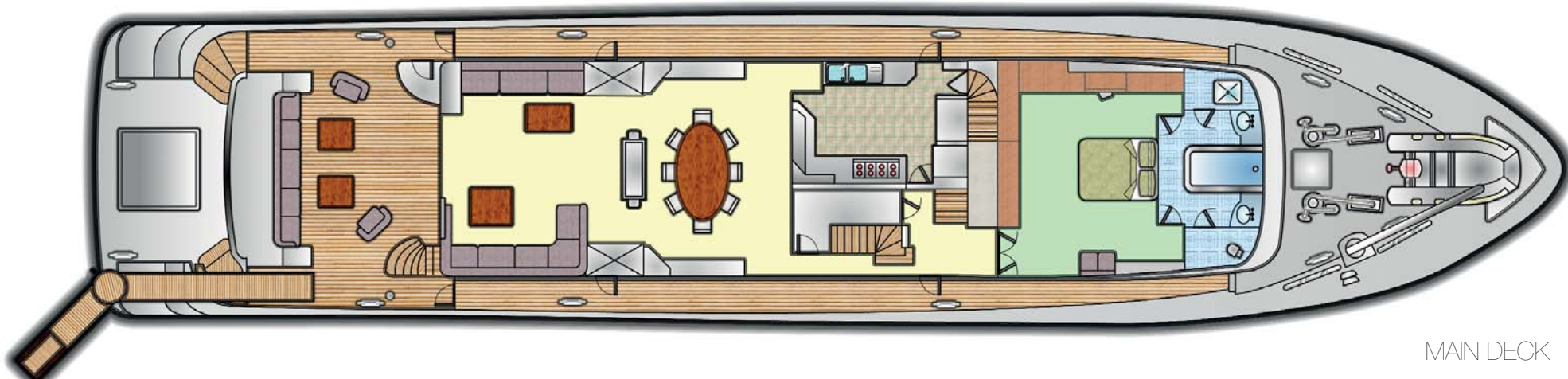
Design & Printing by FAB Studio - Nice - Deck plans by Hubert Wilk  
Special thanks to the Captain and Crew for their professional assistance, patience and kindness.



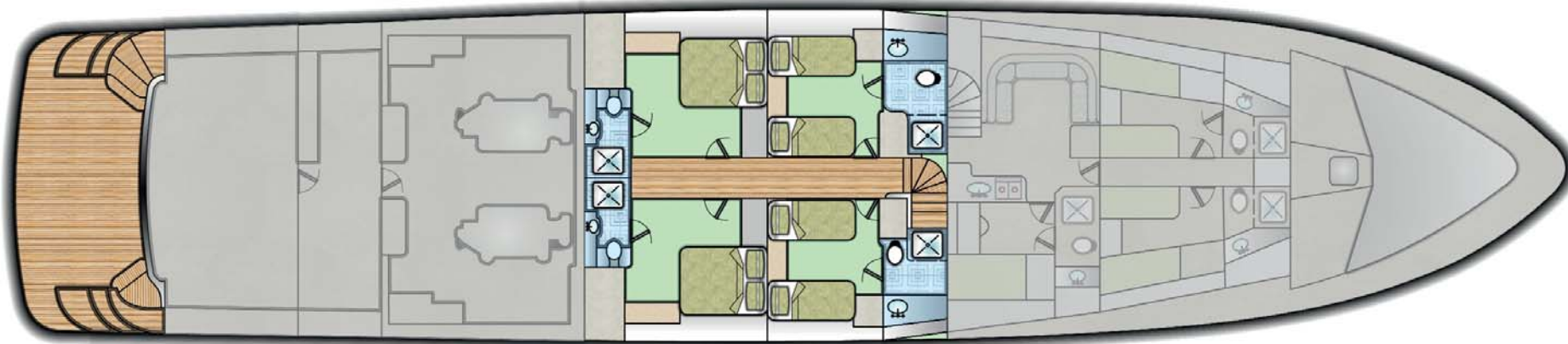
SUN DECK



UPPER DECK



MAIN DECK



LOWER DECK

